

Notification of Street Closure

TO: All Agencies Concerned
FROM: City of Ormond Beach, Engineering Division
DATE: July 20, 2021

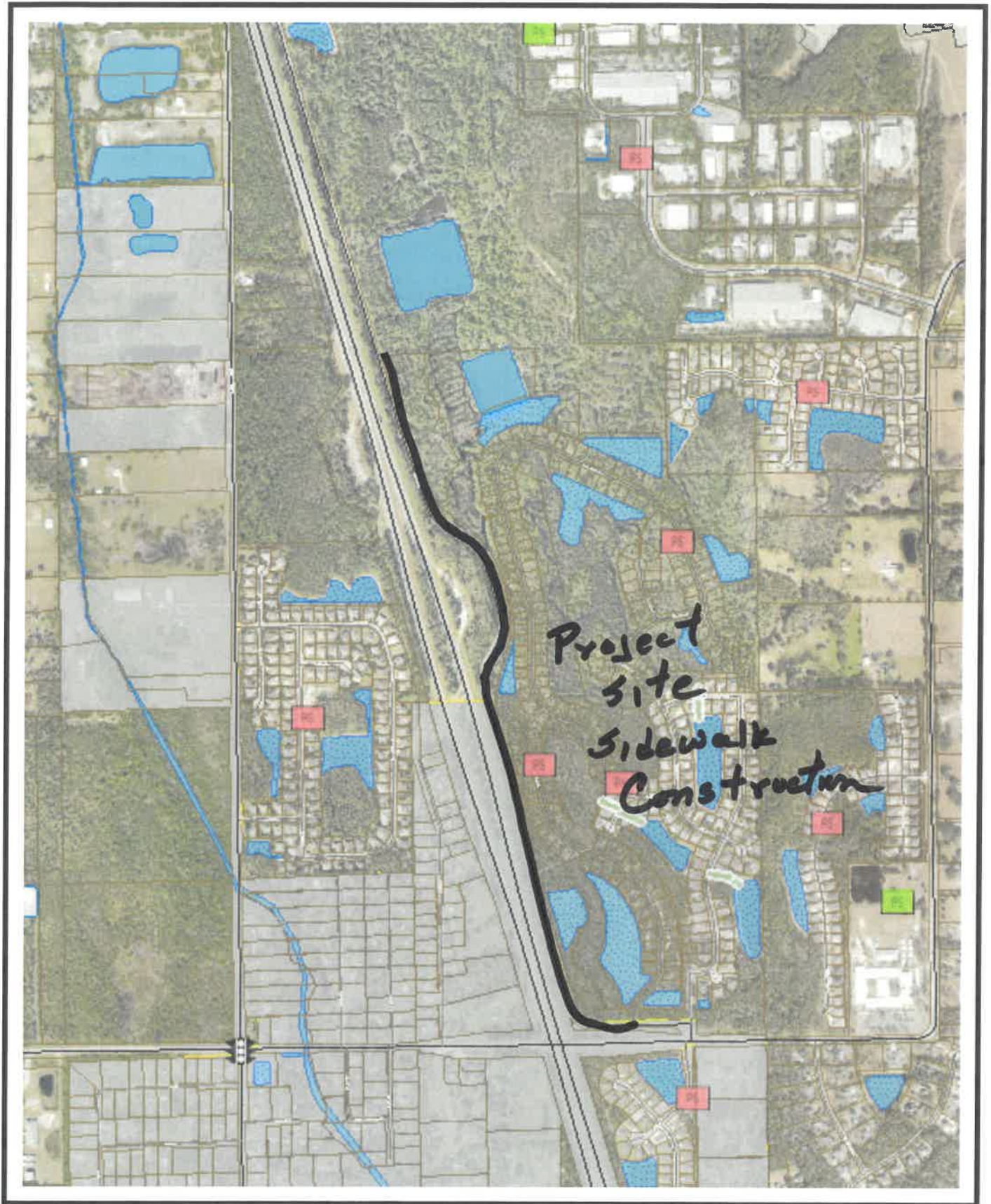
RE: Road Closure of North Bound Lane Pineland Trail

The north bound lane of Pineland Trail beginning at the intersection of Pineland Trail and Sandoval Drive for approximately 1 mile will be closed intermittently during the work day for a period of approximately 45 days. The purpose of this closure is for the construction of a sidewalk. During the closure, one-way traffic will be alternated under the direction of flagmen. The Maintenance of traffic shall be in accordance with FDOT Design Standard Index No. 603.

If you have any questions regarding this closure, please contact the City of Ormond Beach Engineering Department at 386-676-3269.

NOTIFICATION LIST

	<u>Phone</u>	<u>Fax/E-mail</u>
EVAC Ambulance Service	386-252-4911	commsupervisors@vcso.us
Ormond Beach Fire Admin.	386-676-3255	firedepartmentallstaff@ormondbeach.org
Ormond Beach Police	386-677-0731	pdsupervisors@ormondbeach.org pdtrafficunit@ormondbeach.org
VCSSO Communications	386-248-1777	commadmin@vcso.us
Ormond Beach Public Works	386-676-3220	pwofficeoperations@ormondbeach.org
Ormond Beach Post Office	386-676-0693	amy.c.carter@usps.gov
Volusia County School Trans	386-258-4677	386-258-4688
VOTRAN	386-756-7496	cmack@volusia.org
Fed Ex	386-274-2500	386-274-4741
Florida Highway Patrol Dispatch	407-737-2200	DOSORCC@flhsmv.gov



LOCATION MAP

Pineland Trail

DEA

