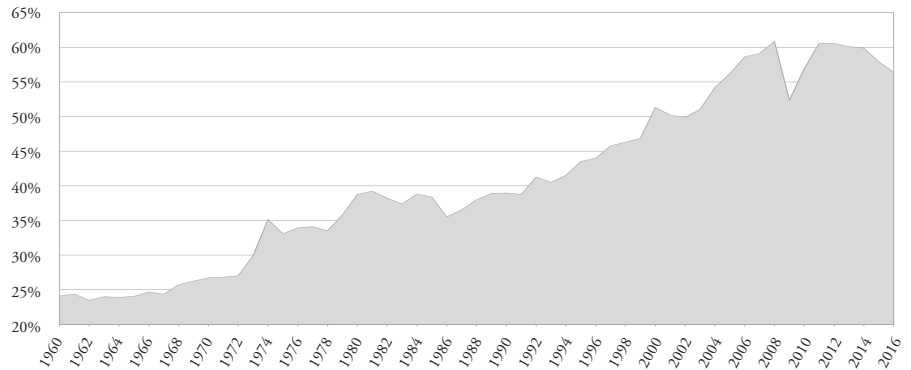


City of Ormond Beach Police Officers Pension - International Equity ADR Portfolio

The first quarter of 2018 was marked by the return of volatility following an extended period of rising equity markets. Although the global economy continues to expand, heightened trade tensions and rising interest rates resulting from less accommodative monetary policies caused equity markets to experience sharp swings during the quarter. Our benchmark, the MSCI ACWI ex U.S., finished the quarter down 1.3%, its first negative quarter since the end of 2016.

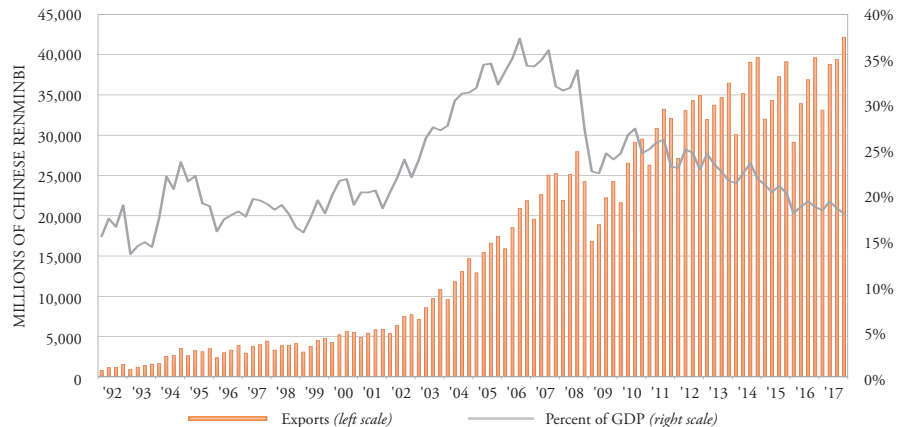
While trade contributed to less than 25% of the global economy in 1960, the increased adoption of free trade agreements has led to the removal of tariffs and opening of borders, resulting in an increased importance of trade to the global economy in recent years (CHART 1). However, trends are beginning to shift as protectionism is rising, which threatens this multi-decade source of global growth. In early March, President Trump declared tariffs on imports of steel and aluminum and directed his trade representative to level additional tariffs on \$50 billion worth of imports from China in response to alleged stealing of U.S. intellectual property. While Trump has said a trade war would be easy to win, the Chinese economy no longer depends on exports the way it once did (CHART 2). Furthermore, trade with China still plays an

CHART 1: Trade is of Increasing Importance to Global Economy
Trade as a Percentage of Global GDP



Data from 12/31/60–12/31/16
Source: World Bank

CHART 2: Chinese Exports on the Rise, But Shrinking in Importance to Economy



Data as of 12/31/17
Source: Thomson Reuters Datastream, National Bureau of Statistics of China, China Customs

important role in the U.S. economy (CHART 3). Tariffs implemented on imports from China would amount to a tax on the U.S. consumer while retaliatory tariffs, which China has

already announced, on U.S. goods imported to China could result in lost jobs in the U.S. What remains to be seen is if these announcements are a change in U.S. trade policy or if they

MARKET VALUE SUMMARY

Quarter Ending
3/31/18

| | |
|------------------------|--------------------|
| Equities | \$2,094,517 |
| Cash | \$17,361 |
| Total Portfolio | \$2,111,878 |

PORTFOLIO PERFORMANCE⁽¹⁾⁽²⁾

Quarter Ending
3/31/18

| | |
|---|-------------|
| Police Officers' Pension (net of fees) | 0.5% |
| MSCI ACWI ex US Index ⁽³⁾ | -1.3% |

⁽¹⁾Performance and Benchmark data sources: Renaissance Research, Bloomberg, MSCI

⁽²⁾All portfolio and benchmark returns stated through 3/29/18.

⁽³⁾Renaissance primary benchmark.

are a starting point for negotiations to improve the U.S. trade balance. The exemptions on the metal tariffs given to many U.S. allies along with an ongoing dialogue between Chinese and U.S. officials keep us hopeful that an all-out trade war will not occur.

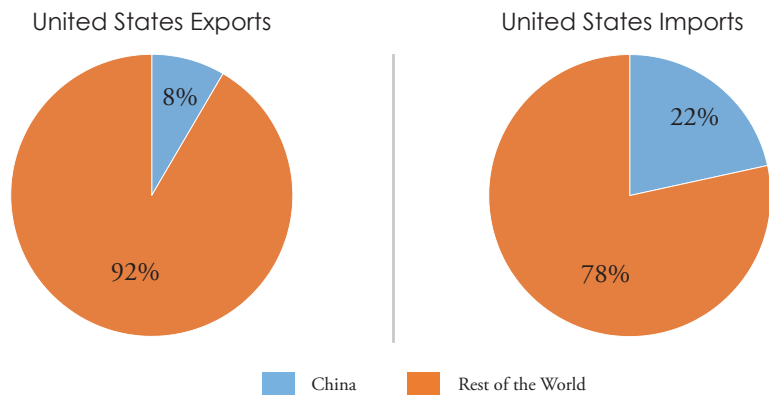
There were also positive signs on the trade front during the first quarter. The U.S. backed off some of its most severe demands, helping U.S., Canadian and Mexican negotiators inch closer to a reworked NAFTA agreement, while the U.S. and South Korea

quickly wrapped up a bilateral trade deal. Outside of the U.S., the Trans-Pacific Partnership (TPP), thought to be dead when President Trump backed the U.S. out of the deal, was signed by 11 nations. This could be a significant turning point in global trade as the U.S. shifts from a champion of free trade towards a more nationalistic approach to trade and geopolitics.

The U.S. dollar fell 2% during the quarter (according to the ICE U.S. Dollar Index) and is now 13% off its highs set near the end of 2016. A major reason for the dollar weakness is the deteriorating U.S. fiscal situation. While other countries, including many Western European nations, have improved their fiscal budgets with the help of austerity measures, the recent U.S. tax bill could add significantly to the federal deficit. This could cause the U.S. dollar to lose its safe haven status and result in the dollar depreciating further. Even with the recent underperformance of the U.S. dollar, U.S.-based international investors have nonetheless experienced a headwind over the past five years due to the sharp dollar rally in 2014 and 2015 (CHART 4).

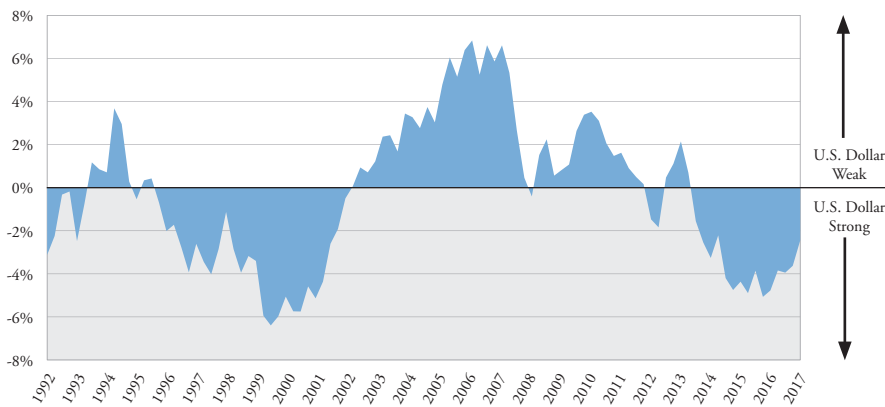
Although several recent economic data points announced during March came in below investors' expectations, the growth story that helped power stock markets higher in 2017 still appears to be on sound footing. While the Eurozone Economic Sentiment Indicator's March reading missed consensus forecasts, it remains at elevated levels that previously had not been seen since 2000, indicating that the Eurozone remains strong. In Japan, the easy-money "Abenomics" policies of Prime Minister Shinzo Abe have allowed GDP to grow for 12 consecutive quarters, its longest run without a negative quarter since before the global financial crisis in 2008 (CHART 5). However, while the Japanese economy is in good shape, repeated cronyism scandals

CHART 3: U.S. Trade



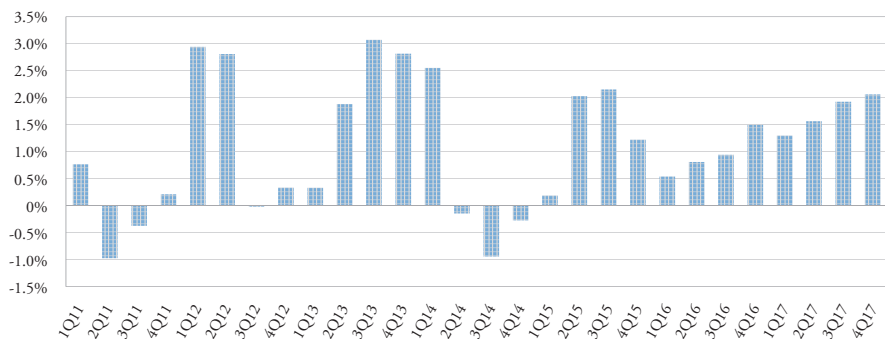
Data as of: 12/31/17
Source: International Monetary Fund

CHART 4: Rolling 5-Year Annualized Excess Returns: U.S. Dollar vs. Local Currency
MSCI ACWI ex US Index



Data as of 12/31/92–3/31/18
Source: Renaissance Research, FactSet, MSCI

CHART 5: Japanese Economy Improving
Percent Change in Real GDP vs. 12 Months Prior



Data as of 12/31/17
Source: FactSet, Japanese Cabinet Office

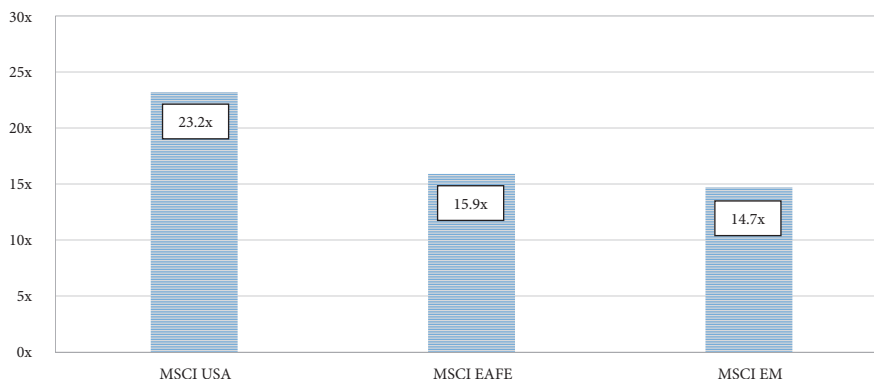
have caused Abe's approval rating to plummet. With party elections coming up for Abe's Liberal Democratic Party in September, a continuation of falling popularity could put Abe's possible third consecutive term as prime minister in jeopardy. A leadership change could hurt the momentum of "Abenomics" and would be a negative for a Japanese economy that appears to be on the cusp of breaking out of a decades-long battle with deflation.

Portfolio performance for the quarter was positive on both an absolute and relative basis. Our overweight towards emerging markets helped boost relative performance as emerging markets outperformed developed markets by nearly 3% during the first quarter, marking the fifth consecutive quarter of outperformance. Even with recent returns, emerging market valuations remain relatively favorable versus developed markets (CHART 6). Making the case even more attractive is that emerging markets are expected to continue to see higher GDP growth rates than developed markets.

Positive stock selection in developed markets was more than enough to offset negative selection in emerging markets. Within developed markets, the UK-based engineering company **GKN** (GKNLY, +50.3%) saw shares rise after a takeover offer was made by Melrose Industries. The company should be a beneficiary of increased adoption of electric vehicles (CHART 7), a major long-term theme that we are attempting to capitalize on in the portfolio. Stock selection in emerging markets was hurt by poor performance from **NetEase** (NTES, -18.7%) as the Chinese online gaming company saw margins fall due to changes in its sales mix and higher sales and marketing spending.

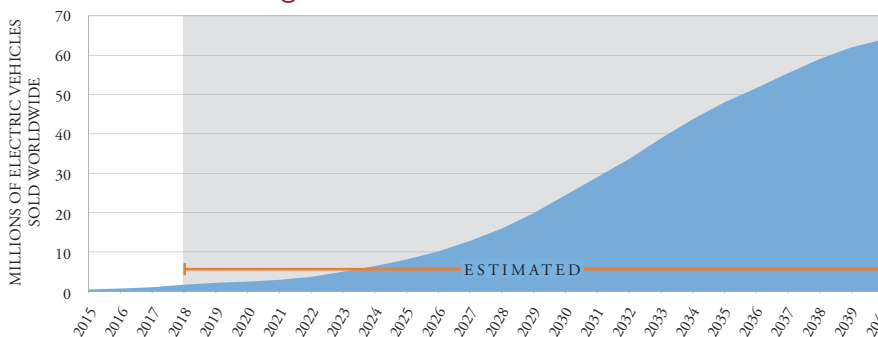
As the global economy continues to improve, central banks are beginning to transition away from the easy money policies of the past decade towards

CHART 6: U.S. Equities Trade at Premium to International Equities
Trailing 12-Month Price-to-Earnings Ratio



Data as of 3/31/18
Source: FactSet, MSCI

CHART 7: Electric Vehicle Sales Expected to Soar in Coming Years



Data as of 12/31/17
Source: Bloomberg New Energy Finance

CHART 8: Central Bankers Beginning to Raise Rates in Some Nations

| | 12/31/2016 | Current as of 3/31/18 | Change from 2016 |
|---|------------|-----------------------|------------------|
| United Kingdom (<i>Bank Rate</i>) | 0.25% | 0.50% | ▲ |
| United States (<i>Federal Funds</i>) | 0.75% | 1.75% | ▲ |
| Canada (<i>Target Rate</i>) | 0.50% | 1.25% | ▲ |
| China (<i>1 Year or Less Rate on RMB Loans</i>) | 4.35% | 4.35% | ▬ |
| Eurozone (<i>Main Refinancing Operations Minimum Base Rate</i>) | 0.00% | 0.00% | ▬ |
| Japan (<i>Policy Rate</i>) | -0.10% | -0.10% | ▬ |
| Brazil (<i>Target Selic Rate</i>) | 13.75% | 6.50% | ▼ |

Data as of 3/31/18
Source: Thomson Reuters Datastream

tighter monetary policy. Several major central banks have already raised interest rates (CHART 8) while the European Central Bank (ECB) looks likely to end asset purchases in 2018 with the possibility of raising interest rates in 2019. We have been adding to the

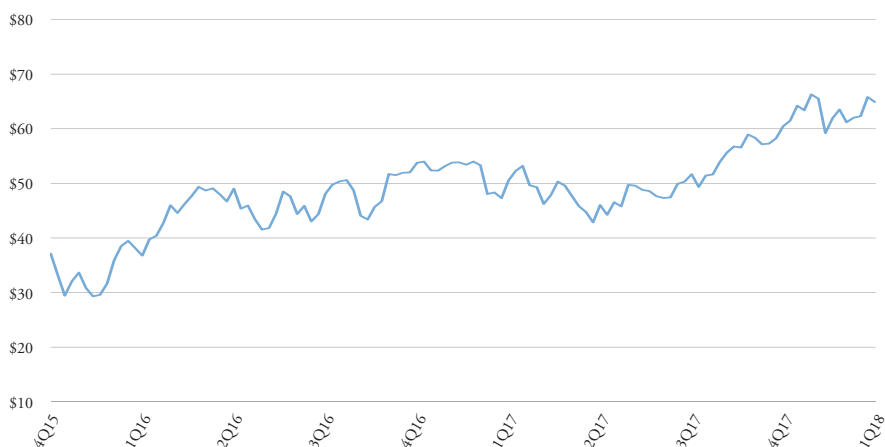
Financials sector since the end of 2016 in order to take advantage of rising interest rates, and it is now our largest single sector weight in the portfolio. **DBS Group** (DBSDY, +12.8%), a Singapore-based bank, was the top-performing holding within Financials

as higher interest rates began to flow through to its net interest margin, which rose 5 basis points quarter-over-quarter. On the downside, **AXA** (AXAHY, -10.4%) saw shares fall after the company announced a \$15 billion acquisition of reinsurer XL Group.

We have also increased our weighting to the Materials sector to capitalize on the strong global economy. While we had no exposure to the sector for a portion of 2015, the weighting in the portfolio has increased to nearly 13%. Our focus within Materials has been on chemical companies that produce value-added products. Higher raw material costs, including oil (CHART 9), hurt the profitability of some of these companies in 2017. However, this headwind could abate in 2018 as companies such as **Akzo Nobel** (AKZOY, +7.6%) are able to pass along their rising costs to customers in the form of higher prices. Negatively, the lack of an infrastructure spending bill in the U.S.

CHART 9: Oil Has Rallied Since 2015

Crude Oil—West Texas Intermediate, U.S. Dollars Per Barrel



Data from 12/31/15–3/31/18

Source: Thomson Reuters Datastream, Fathom Consulting

has hurt **CRH** (CRH, -4.1%) as additional infrastructure spending would increase demand for the company's concrete and cement.

While the global economy continues to look healthy, investors should remain aware of the risks facing the markets. The threat of a trade war, ele-

vated valuations in certain sectors and the tightening of monetary policy are all sources of uncertainty in the market that could lead to periods of volatility. As an active manager, we believe we are able to position the portfolio to take advantage of emerging long-term trends while mitigating risk.

The opinions stated in this presentation are those of the authors as of the date listed on this presentation and are subject to change at any time due to changes in market or economic conditions. Past performance is not indicative of future results. Performance for periods of less than a year is not annualized. All returns are shown in U.S. dollars unless otherwise stated.

Individual securities and their returns listed in the commentary are based upon a representative account of the strategy discussed. These securities and returns may not be the same for all accounts due to factors such as pending trades or account restrictions.

Renaissance is neither a law firm nor an accounting firm, and no portion of its services should be construed as legal or accounting advice. Please remember that it remains your responsibility to advise your primary investment professional and Renaissance, in writing, if there are any changes to your personal/financial situation, investment objectives or if you would like to add, delete or modify any reasonable restrictions to our investment advisory services. Unless you advise, in writing, to the contrary, we will assume that there are no restrictions on our services, other than to manage the account in accordance with your designated investment objective and your Investment Advisory Agreement. Please compare this statement with account statements received from the account custodian. The account custodian does not verify the accuracy of the advisory fee calculation. Please advise us, in writing, if you have not been receiving quarterly statements directly from the account custodian. Renaissance does not maintain any investment monitoring or performance responsibility for unmanaged or unsupervised assets and/or accounts. The client and/or their other investment professionals retain exclusive responsibility for the monitoring and performance of such assets and/or accounts. A copy of our current written disclosure statement discussing our advisory services and fees is available upon request.

Portfolio Manager



Joe G. Bruening, CFA

Client Services



Mary C. Meiners

Portfolio Administrator



Steve M. Frakes

50 East RiverCenter Blvd., Suite 1200
Covington, KY 41011

City of Ormond Beach Police Officers Pension - International Equity ADR Portfolio

| <u>Ticker</u> | <u>Security Description</u> | <u>Shares/Face</u> | <u>Unit Cost</u> | <u>Total Cost</u> | <u>Price</u> | <u>Market Value</u> | <u>% of Total Assets</u> |
|--------------------|-----------------------------------|--------------------|------------------|-------------------|--------------|---------------------|--------------------------|
| DEVELOPED | | | | | | | |
| Canada | | | | | | | |
| CNI | Canadian National Railway | 502 | 51.41 | \$25,810 | 73.13 | \$36,711 | 1.7% |
| MGA | Magna International | 679 | 48.03 | \$32,614 | 56.35 | \$38,262 | 1.8% |
| MFC | Manulife Financial | 1,836 | 19.07 | \$35,018 | 18.58 | \$34,113 | 1.6% |
| TECK | Teck Resources | 1,643 | 23.13 | \$38,005 | 25.76 | \$42,324 | 2.0% |
| | TOTAL Canada | | | \$131,446 | | \$151,409 | 7.2% |
| Denmark | | | | | | | |
| PANDY | Pandora | 1,566 | 21.14 | \$33,102 | 26.80 | \$41,974 | 2.0% |
| | TOTAL Denmark | | | \$33,102 | | \$41,974 | 2.0% |
| Finland | | | | | | | |
| SEOAY | Stora Enso OYJ | 2,463 | 18.61 | \$45,838 | 18.36 | \$45,211 | 2.1% |
| | TOTAL Finland | | | \$45,838 | | \$45,211 | 2.1% |
| France | | | | | | | |
| ARKAY | Arkema | 379 | 85.17 | \$32,280 | 130.36 | \$49,408 | 2.3% |
| AXAHY | AXA | 1,210 | 30.63 | \$37,067 | 26.58 | \$32,162 | 1.5% |
| CGEMY | Capgemini | 1,537 | 12.93 | \$19,867 | 24.89 | \$38,259 | 1.8% |
| RNLSY | Renault | 1,848 | 19.61 | \$36,240 | 24.23 | \$44,773 | 2.1% |
| SNY | Sanofi | 911 | 47.80 | \$43,547 | 40.08 | \$36,513 | 1.7% |
| SCRYY | SCOR | 9,000 | 3.64 | \$32,736 | 4.09 | \$36,819 | 1.7% |
| VLEEY | Valeo | 1,014 | 13.15 | \$13,333 | 32.99 | \$33,447 | 1.6% |
| | TOTAL France | | | \$215,070 | | \$271,381 | 12.9% |
| Germany | | | | | | | |
| AZSEY | Allianz | 1,685 | 12.28 | \$20,692 | 22.69 | \$38,233 | 1.8% |
| DPSGY | Deutsche Post | 746 | 33.67 | \$25,121 | 43.97 | \$32,802 | 1.6% |
| IFNNY | Infineon Technologies | 1,589 | 16.36 | \$25,995 | 26.74 | \$42,485 | 2.0% |
| | TOTAL Germany | | | \$71,807 | | \$113,519 | 5.4% |
| Ireland | | | | | | | |
| CRH | CRH | 1,313 | 35.41 | \$46,496 | 34.02 | \$44,668 | 2.1% |
| ICLR | ICON | 361 | 62.14 | \$22,434 | 118.14 | \$42,649 | 2.0% |
| JAZZ | Jazz Pharmaceuticals | 271 | 150.04 | \$40,660 | 150.99 | \$40,918 | 1.9% |
| RYAAY | Ryanair | 320 | 69.64 | \$22,285 | 122.85 | \$39,312 | 1.9% |
| | TOTAL Ireland | | | \$131,875 | | \$167,547 | 7.9% |
| Israel | | | | | | | |
| CHKP | Check Point Software Technologies | 390 | 50.68 | \$19,765 | 99.34 | \$38,743 | 1.8% |
| | TOTAL Israel | | | \$19,765 | | \$38,743 | 1.8% |
| Japan | | | | | | | |
| BRDCY | Bridgestone | 1,642 | 18.64 | \$30,609 | 21.76 | \$35,727 | 1.7% |
| KDDIY | KDDI | 3,277 | 11.19 | \$36,658 | 12.72 | \$41,683 | 2.0% |
| MIELY | Mitsubishi Electric | 1,049 | 26.57 | \$27,874 | 31.96 | \$33,527 | 1.6% |
| NTTY | Nippon Telephone & Telegraph | 865 | 31.84 | \$27,543 | 46.09 | \$39,870 | 1.9% |
| IX | Orix | 425 | 81.39 | \$34,589 | 89.86 | \$38,191 | 1.8% |
| SMCAY | SMC Corp. | 1,625 | 13.06 | \$21,225 | 20.02 | \$32,539 | 1.5% |
| SNE | Sony | 780 | 50.90 | \$39,699 | 48.34 | \$37,705 | 1.8% |
| TRYIY | Toray Industries | 2,421 | 17.55 | \$42,480 | 18.83 | \$45,575 | 2.2% |
| | TOTAL Japan | | | \$260,676 | | \$304,818 | 14.4% |
| Netherlands | | | | | | | |
| AER | AerCap Holdings | 750 | 20.64 | \$15,479 | 50.72 | \$38,040 | 1.8% |
| AKZOY | Akzo Nobel | 1,579 | 24.33 | \$38,424 | 31.46 | \$49,675 | 2.4% |
| NXPI | NXP Semiconductors | 337 | 108.38 | \$36,525 | 117.00 | \$39,429 | 1.9% |

City of Ormond Beach Police Officers Pension - International Equity ADR Portfolio

| Ticker | Security Description | Shares/Face | Unit Cost | Total Cost | Price | Market Value | % of Total Assets |
|-----------------------|------------------------------------|-------------|-----------|-------------|--------|--------------|-------------------|
| TOTAL Netherlands | | | | \$90,428 | | \$127,144 | 6.0% |
| Singapore | | | | | | | |
| DBSDY | DBS Group | 445 | 58.82 | \$26,176 | 83.89 | \$37,329 | 1.8% |
| UOVEY | United Overseas Bank | 947 | 42.25 | \$40,009 | 41.94 | \$39,720 | 1.9% |
| TOTAL Singapore | | | | \$66,185 | | \$77,049 | 3.6% |
| Spain | | | | | | | |
| ACSAY | ACS | 4,679 | 7.90 | \$36,963 | 7.79 | \$36,426 | 1.7% |
| TOTAL Spain | | | | \$36,963 | | \$36,426 | 1.7% |
| United Kingdom | | | | | | | |
| CUK | Carnival plc | 580 | 58.55 | \$33,957 | 65.50 | \$37,990 | 1.8% |
| FERGY | Ferguson | 5,200 | 7.82 | \$40,674 | 7.58 | \$39,390 | 1.9% |
| GKNLY | GKN plc | 5,971 | 4.66 | \$27,854 | 6.50 | \$38,782 | 1.8% |
| PSMMY | Persimmon | 596 | 53.73 | \$32,022 | 70.98 | \$42,305 | 2.0% |
| TOTAL United Kingdom | | | | \$134,507 | | \$158,467 | 7.5% |
| TOTAL DEVELOPED | | | | \$1,237,662 | | \$1,533,688 | 72.6% |
| EMERGING | | | | | | | |
| China | | | | | | | |
| BIDU | Baidu | 158 | 242.57 | \$38,327 | 223.19 | \$35,264 | 1.7% |
| CICHY | China Construction Bank | 1,842 | 22.89 | \$42,167 | 20.54 | \$37,835 | 1.8% |
| CEA | China Eastern Airlines | 909 | 29.19 | \$26,535 | 36.80 | \$33,451 | 1.6% |
| NTES | NetEase | 126 | 134.57 | \$16,956 | 280.39 | \$35,329 | 1.7% |
| YY | YY Inc. | 334 | 116.21 | \$38,815 | 105.20 | \$35,137 | 1.7% |
| TOTAL China | | | | \$162,799 | | \$177,016 | 8.4% |
| Hong Kong | | | | | | | |
| WHGLY | WH Group | 1,808 | 12.64 | \$22,852 | 21.30 | \$38,518 | 1.8% |
| TOTAL Hong Kong | | | | \$22,852 | | \$38,518 | 1.8% |
| Mexico | | | | | | | |
| BSMX | Banco Santander Mexico | 5,248 | 8.10 | \$42,507 | 7.17 | \$37,628 | 1.8% |
| TOTAL Mexico | | | | \$42,507 | | \$37,628 | 1.8% |
| Russia | | | | | | | |
| LUKOY | Lukoil | 1,128 | 54.01 | \$60,927 | 69.22 | \$78,080 | 3.7% |
| TOTAL Russia | | | | \$60,927 | | \$78,080 | 3.7% |
| South Korea | | | | | | | |
| KB | KB Financial | 610 | 44.17 | \$26,946 | 57.94 | \$35,343 | 1.7% |
| SKM | SK Telecom | 1,402 | 20.28 | \$28,427 | 24.17 | \$33,886 | 1.6% |
| TOTAL South Korea | | | | \$55,373 | | \$69,230 | 3.3% |
| Taiwan | | | | | | | |
| ASX | Advanced Semiconductor Engineering | 5,632 | 5.54 | \$31,208 | 7.26 | \$40,888 | 1.9% |
| TSM | Taiwan Semiconductor Manufacturing | 1,013 | 14.39 | \$14,579 | 43.76 | \$44,329 | 2.1% |
| TOTAL Taiwan | | | | \$45,787 | | \$85,217 | 4.0% |
| Thailand | | | | | | | |
| KPCPY | Kasikornbank | 1,397 | 28.05 | \$39,185 | 27.12 | \$37,885 | 1.8% |
| TOTAL Thailand | | | | \$39,185 | | \$37,885 | 1.8% |
| Turkey | | | | | | | |
| TKC | Turkcell Iletisim Hizmetleri | 3,897 | 9.65 | \$37,607 | 9.56 | \$37,255 | 1.8% |
| TOTAL Turkey | | | | \$37,607 | | \$37,255 | 1.8% |
| TOTAL EMERGING | | | | \$467,038 | | \$560,829 | 26.6% |

Portfolio Holdings as of 3/31/2018

City of Ormond Beach Police Officers Pension - International Equity ADR Portfolio

| <u>Ticker</u> | <u>Security Description</u> | <u>Shares/Face</u> | <u>Unit Cost</u> | <u>Total Cost</u> | <u>Price</u> | <u>Market Value</u> | <u>% of Total Assets</u> |
|---------------|-------------------------------------|--------------------|------------------|-------------------|--------------|---------------------|--------------------------|
| | TOTAL EQUITIES | | | \$1,704,700 | | \$2,094,517 | 99.2% |
| | Total Cash | | | \$17,361 | | \$17,361 | 0.8% |
| | Total Portfolio | | | \$1,722,061 | | \$2,111,878 | 100.0% |
| | Accrued Income | | | | | \$2,846 | |
| | Total Portfolio plus Accrued Income | | | | | \$2,114,724 | |

City of Ormond Beach Police Officers Pension - International Equity ADR Portfolio

| Broker | Shares | Value | Cents Per Share | Commission Recapture | Directed | Execution Only | Minority | Research | Soft Dollar | Total Commission |
|------------------------|---------------|----------------|------------------------|-----------------------------|-----------------|-----------------------|-----------------|-----------------|--------------------|-------------------------|
| Cowen & Company | 16,833 | 389,164 | 2.00 | 0.00 | 0.00 | 336.66 | 0.00 | 0.00 | 0.00 | 336.66 |
| Instinet | 258 | 38,735 | 1.00 | 0.00 | 0.00 | 2.58 | 0.00 | 0.00 | 0.00 | 2.58 |
| Jefferies | 3,394 | 108,757 | 1.50 | 0.00 | 0.00 | 50.91 | 0.00 | 0.00 | 0.00 | 50.91 |
| Liquidnet | 6,973 | 39,491 | 1.50 | 0.00 | 0.00 | 104.60 | 0.00 | 0.00 | 0.00 | 104.60 |
| Lynch, Jones, and Ryan | 14,437 | 218,943 | 5.00 | 721.85 | 0.00 | 0.00 | 0.00 | 0.00 | 0.00 | 721.85 |
| NatAlliance Securities | 2,405 | 53,169 | 1.50 | 0.00 | 0.00 | 36.10 | 0.00 | 0.00 | 0.00 | 36.10 |
| TOTALS | 44,300 | 848,258 | 2.83 | 721.85 | 0.00 | 530.85 | 0.00 | 0.00 | 0.00 | 1,252.70 |